

**EPSON**  
EXCEED YOUR VISION



# Epson Stylus™ Pro 11880

**Big Colour. Big Output. Big Business.**

**EPSON ULTRACHROME**  
**K3**<sub>INK</sub>  
VIVID MAGENTA



**IMEDIA Imaging Supplies**

7 Dalmore Drive  
Scoresby VIC 3179

P: 1300 132 644 [www.imedia.com.au](http://www.imedia.com.au)  
F: 1300 132 963 [info@imedia.com.au](mailto:info@imedia.com.au)

- 1 New Image Processing Technology
- 2 2880 x 1440dpi Resolution
- 3 Epson UltraChrome™ K3 Ink with Vivid Magenta
- 4 Epson Colorimetric Calibration
- 5 Epson MicroPiezo TFP™ Print Head
- 6 Automatic Ink Detection
- 7 Active Photo & Matte Black Inks
- 8 High Performance Print Speeds
- 9 Professional Media Handling up to 64" Wide
- 10 Thick Media Support up to 1.5mm
- 11 Media Bar Code Tracking & Identification System
- 12 Automatic Print Head Alignment
- 13 Borderfree™ Printing up to 54"
- 14 Standard Built-in Automatic Take-up Reel
- 15 Nine 700ml Ink Cartridges
- 16 Standard USB 2.0 and Gigabit Ethernet



*“Collectors of my photographic art demand the best image quality and durability. That’s why I choose Epson for all my inkjet prints.”*

*Ken Duncan,*  
**Ken Duncan Panographs Pty Ltd**

# Superior Image Quality

## 2880 x 1440dpi

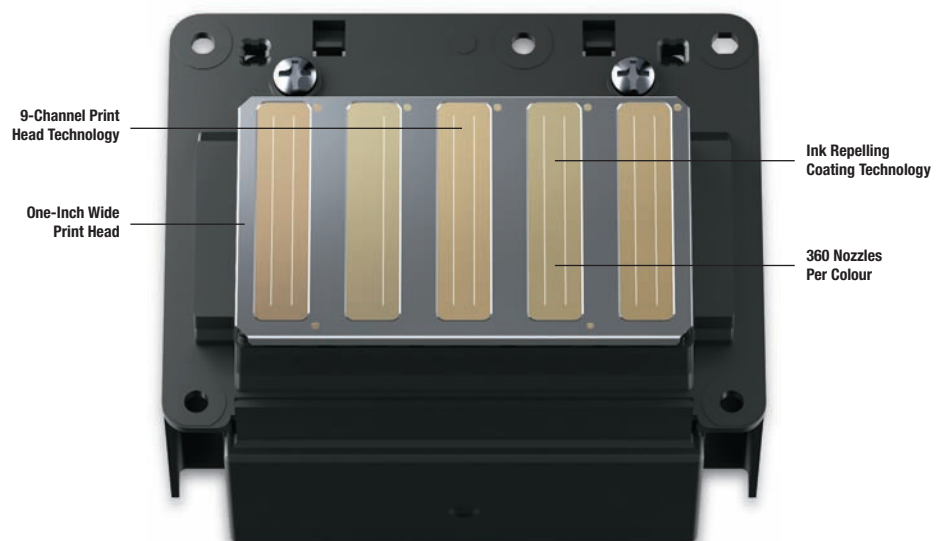
The Epson Stylus™ Pro 11880 offers industry-leading output quality, with print resolutions of up to 2880 x 1440dpi. This is achieved as the result of technologies that include Variable Sized Droplet Technology, which supports ink droplets as small as 3.5pl, and Advanced Meniscus Control, which enables the printer to deliver sharp, accurately placed spherical ink droplets with high levels of precision.

## New Image Processing Technology

Epson large format printers have long been regarded as leaders in delivering exceptional quality prints. With the introduction of the Epson Stylus Pro 11880, this leadership has been given even greater emphasis. Featuring new algorithms for improved dot placement, the Epson Stylus Pro 11880 delivers the highest image quality available, in both high and low print resolution modes.

## MicroPiezo TFP™ Print Head

Underpinning the Epson Stylus Pro 11880's industry-leading quality is its incredible control over ink droplet size, shape and placement. This is achieved by means of the printer's MicroPiezo TFP (Thin Film Piezo) print head, which uses a unique method of controlling the ink meniscus (surface) in each of the nine colour channels. The result is perfectly rounded ink droplets of various sizes – larger sizes for solid colour areas and smaller droplets for gradation, toning and detail – delivered with absolute precision.



# High Productivity

## Media Barcode Tracking

An in-built Media Barcode Tracking and Identification System enables the Epson Stylus™ Pro 11880 to record, by means of barcode printing, media type and remaining length on roll media. Using the barcoded information, the printer automatically verifies the media type and remaining length when partially used rolls of media are loaded. Along with helping to reduce media wastage, the barcode tracking system helps to eliminate costly production errors arising from incorrect media selection.

## Active Photo and Matte Black Inks

The Epson Stylus Pro 11880's active Photo and Matte Black inks support automatic switching between the two black ink formulations without the need to remove or re-install cartridges. This new system removes the need to flush ink lines when switching between Photo and Matte Black.

## Pressurised 700ml Ink Cartridges

With high-capacity pressurised 700ml ink cartridges, the Epson Stylus Pro 11880 improves yield per cartridge, reinforcing the printer's suitability for high volume print environments. The pressurised cartridges reduce ink wastage and provide a consistent flow of ink to each of the print head's nine channels.

## Permanent Print Head

A major advantage of the Epson Stylus Pro 11880 is its permanent print head which, aside from improving the overall performance of the printer, minimises the amount of time and effort required for maintenance. By avoiding the unnecessary cost of frequently replacing print heads, the Epson permanent print head assists in reducing the printer's overall cost of ownership.

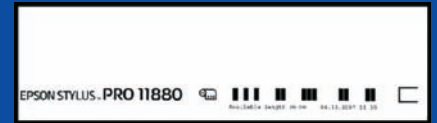
## 360 Nozzles Per Colour

Building on the print head technology leadership established by Epson with the solid-state Micro Piezo™ print head, the Epson Stylus Pro 11880 features the 9-channel Epson MicroPiezo TFP™ (Thin Film Piezo) print head. This new, one-inch wide print head has 360 nozzles per channel (colour) – twice the nozzle count of earlier models and the ability to print at nearly twice the speed. To improve print head reliability, the TFP print head has an ink-repelling coating, which reduces clogging, thereby enhancing productivity.

## Automatic Ink Droplet Detection System

Using precision electrical charge detection technology, the Epson Stylus Pro 11880's Automatic Ink Droplet Detection System detects minute electrical charges on ink droplets fired by the MicroPiezo TFP print head. Activated each time the printer is turned on and after predetermined periods of time, the system automatically enters head-cleaning mode if an insufficient electrical charge is detected, which signifies ink jet clogging.

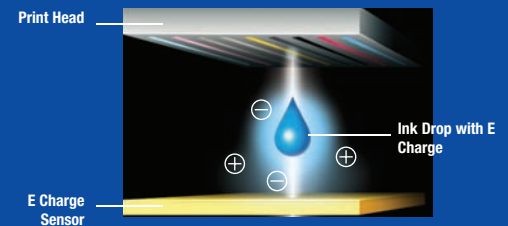
## Media Barcode



## Ink Cartridges



## New Auto Nozzle Check System

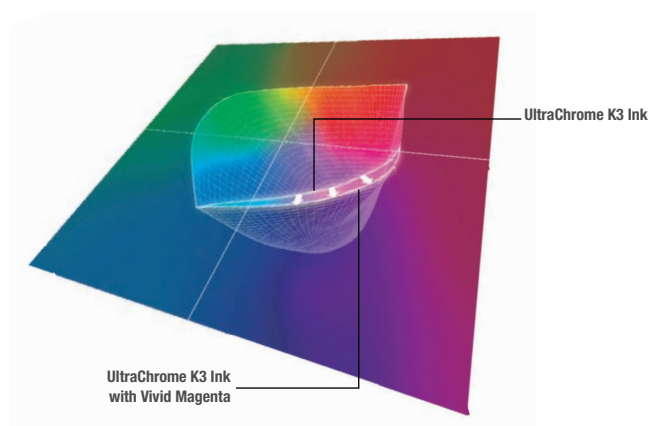


# Wide Colour Gamut

## Epson UltraChrome™ K3 Ink with Vivid Magenta

In building on the enormous advances made with Epson UltraChrome K3 Ink, Epson scientists developed two new inks – Vivid Magenta and Vivid Light Magenta – which utilise a new high-density form of magenta pigment inks.

With the introduction of the two new inks to the Epson UltraChrome K3 ink family, the Epson Stylus™ Pro 11880 utilises an eight-colour ink set, giving it the ability to generate prints using a significantly expanded colour gamut that has advantages over conventional 12 colour ink sets.



UltraChrome K3

UltraChrome K3 VM/VLM\*



\* Conceptual images for reference only

An additional benefit of the new UltraChrome K3 Ink with Vivid Magenta is a reduction in metamerism, thereby delivering an overall improvement in colour reproduction accuracy.



## Absolute Colour Consistency

To achieve absolute colour consistency between printers, each Epson Stylus Pro 11880 is colorimetric calibrated using high precision spectrophotometers. In using spectrophotometers, each individual printer is measured against a predetermined value and, where necessary, the printer is re-calibrated to ensure consistency with each colour. As a result, colour proofs, photographic prints and fine-art prints from different printers of the same model remain totally consistent.

## Excellent Short and Long Term Colour Stability

When Epson UltraChrome K3 Ink with Vivid Magenta is fired onto the media by the MicroPiezo TFP™ print head, it is rapidly absorbed deep into the substrate and as a result, colours become resistant to change and stabilise quickly. Using genuine Epson media, the new ink delivers prints with:

- Stable colour in just 30 minutes
- Lightfastness ratings of up to 75 years\* for colour and up to 200 years\* for black-and-white prints
- Excellent water resistance
- Improved scratch resistance

## Three Level Black Ink Technology

Epson UltraChrome K3 Ink with Vivid Magenta eliminates the colour twist and short tonal gradation problems traditionally faced by black-and-white photographers using digital printers, delivering black-and-white prints that rival those created with silver-halide processes. A three level black ink technology – Black, Light Black and Light Light Black – gives Epson Stylus Pro 11880 black-and-white prints:

- Smooth tonal gradation with no colour twist
- Rich shadow and highlight detail
- High, black D-max with glossy media
- Unrivalled neutral grey tones

The use of three black inks also allows for a more stable and accurate grey balance which provides professional users with more accurate colour control due to the smaller quantity of colour inks used.

\* Pertains to information on the specifications page

# Powerful Media Versatility

## Automatic Media Cutter

The automatic media cutter helps to streamline the production and post-production processes by accurately and cleanly cutting roll media prints.

## Thick Media Support up to 1.5mm

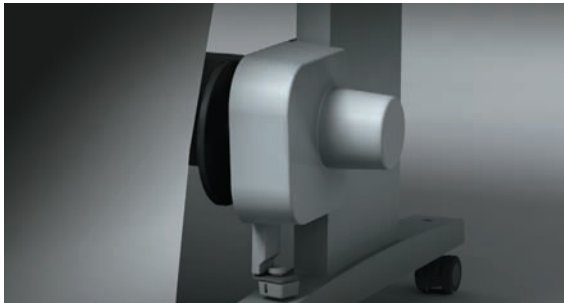
The Epson Stylus™ Pro 11880 has the ability to handle media up to 1.5mm in thickness so the printer can produce high quality output for story-board presentations and images ready for immediate framing.

## Built-in Automatic Take-Up Reel

Featuring optical sensors, the take-up reel automatically detects when printed roll media is about to reach the floor, taking hold of the media and rolling it around the spindle to avoid folds and creases.

The automatic take-up reel is of particular benefit during post-production laminating processes, supporting accurate feeding of long prints into a laminating machine.

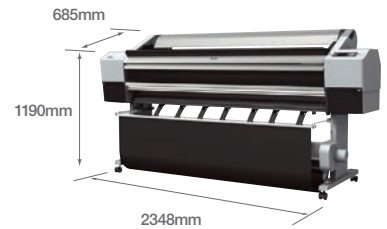
### Automatic Take-Up Reel



Product Description	Code
<b>Printers</b>	
Epson Stylus™ Pro 11880	PR011880
<b>Options</b>	
2/3 Inch Dual Tension Roll Feed Spindle	C12C811231
Auto Cutter Spare Blade	C12C815291
Maintenance Tank	C12C890191
Roll Paper Belt	C12C890121
<b>Ink Cartridges</b>	
<b>700ml UltraChrome™ Ink with Vivid Magenta</b>	
Photo Black	C13T591100
Cyan	C13T591200
Vivid Magenta	C13T591300
Yellow	C13T591400
Light Cyan	C13T591500
Vivid Light Magenta	C13T591600
Light Black	C13T591700
Light Light Black	C13T591900
Matte Black	C13T591800

Product Description	Weight	Type	Size	Code
Premium Glossy Photo Paper (250)	255gsm	Roll	16" x 30.5m 24" x 30.5m 44" x 30.5m 60" x 30.5m	C13S041742 C13S041638 C13S041640 C13S042132
Premium Glossy Photo Paper (250)	255gsm	Cut Sheet	A4 A3 A3+ A2 (20 Sheets) (20 Sheets) (20 Sheets) (25 Sheets)	C13S041285 C13S041288 C13S041289 C13S042091
Photo Paper Gloss (250)	250gsm	Roll	17" x 30.5m 24" x 30.5m 44" x 30.5m	C13S041892 C13S041893 C13S041895
Premium Semigloss Photo Paper (250)	255gsm	Roll	16" x 30.5m 24" x 30.5m 44" x 30.5m 60" x 30.5m	C13S041743 C13S041641 C13S041643 C13S042133
Premium Glossy Photo Paper (170)	162gsm	Roll	16.5" x 30.5m 24" x 30.5m 44" x 30.5m 60" x 30.5m	C13S042076 C13S041390 C13S041392 C13S042136
Premium Semigloss Photo Paper (170)	162gsm	Roll	24" x 30.5m 36" x 30.5m 44" x 30.5m 60" x 30.5m	C13S041393 C13S041394 C13S041395 C13S042137
Premium Semigloss Photo Paper	251gsm	Cut Sheet	A4 A3 A3+ A2 (20 Sheets) (20 Sheets) (20 Sheets) (25 Sheets)	C13S041332 C13S041334 C13S041328 C13S042093
Proofing Paper White Semimatte (250)	250gsm	Roll	17" x 30.5m 24" x 30.5m 36" x 30.5m 44" x 30.5m 60" x 30.5m	C13S042003 C13S042004 C13S042005 C13S042006 C13S042140
Premium Luster Photo Paper (260)	260gsm	Roll	16" x 30.5m 24" x 30.5m 44" x 30.5m 60" x 30.5m	C13S042079 C13S042081 C13S042083 C13S042134
Premium Luster Photo Paper (260)	260gsm	Cut Sheet	A2 (25 Sheets)	C13S042123
Premium Luster Photo Paper (250)	235gsm	Cut Sheet	17" x 22" A3+ (50 Sheets)	C13S041828 C13S041407
Singleweight Matte Paper	115gsm	Roll	17" x 40m 24" x 40m 36" x 40m	C13S041746 C13S041853 C13S041854
Singleweight Matte Paper	115gsm	Cut Sheet	A3+ A2 (100 Sheets) (100 Sheets)	C13S041909 C13S041910
Doubleweight Matte Paper	180gsm	Roll	24" x 25m 36" x 25m 44" x 25m 64" x 25m	C13S041385 C13S041386 C13S041387 C13S042138
Enhanced Matte Paper	189gsm	Roll	17" x 30.5m 24" x 30.5m 44" x 30.5m 64" x 30.5m	C13S041725 C13S041595 C13S041597 C13S042135
Enhanced Matte Poster Board	1.3mm	Cut Sheet	24" x 30" 30" x 40"	C13S041598 C13S041599
Enhanced Matte Paper	192gsm	Cut Sheet	17" x 22" A2" (50 Sheets) (50 Sheets)	C13S041908 C13S042095
Archival Matte Paper	189gsm	Cut Sheet	A4 A3 A3+ (50 Sheets) (50 Sheets) (50 Sheets)	C13S041342 C13S041344 C13S041340
Velvet Fine Art Paper	260gsm	Cut Sheet	A3+ A2 (20 Sheets) (25 Sheets)	C13S041637 C13S042096
UltraSmooth Fine Art Paper	250gsm	Roll	17" x 15.2m 24" x 15.2m 44" x 15.2m 60" x 15.2m	C13S042074 C13S041782 C13S041783 C13S042141
UltraSmooth Fine Art Paper	325gsm	Cut Sheet	A3+ A2 17" x 22" (25 Sheets) (25 Sheets) (25 Sheets)	C13S041896 C13S042105 C13S041897
Textured Fine Art Paper	225gsm	Roll	17" x 15.2m 24" x 15.2m 44" x 15.2m	C13S041745 C13S041447 C13S041449
Textured Fine Art Board	0.69mm	Cut Sheet	24" x 30" 36" x 44"	C13S041450 C13S041451
Watercolor Paper-Radiant White	225gsm	Roll	24" x 18m 44" x 18m	C13S041396 C13S041398
Watercolor Paper-Radiant White	225gsm	Cut Sheet	A3+ (20 Sheets)	C13S041352
Heavyweight Matte Paper A3+	167gsm	Cut Sheet	A3+ (50 Sheets)	C13S041263
Enhanced Synthetic Paper	84gsm	Roll	24" X 40m 44" X 40m	C13S041614 C13S041616
Enhanced Adhesive Synthetic Paper	135gsm	Roll	24" X 30.5m 44" X 30.5m	C13S041617 C13S041619
Epson Premier Art Canvas - Gloss	350gsm	Roll	17" x 12m 24" x 12m 36" x 12m 44" x 12m 50" x 12m	7102590 7102591 7102592 7102593 7102594
Epson Premier Art Canvas - Matte	395gsm	Roll	17" x 12m 24" x 12m 36" x 12m 44" x 12m	7102600 7102601 7102602 7102603

# Specifications



<b>PRODUCT NAME:</b>	Stylus Pro 11880 - 64"
<b>PRODUCT CODE:</b>	PR011880
<b>SIZE</b>	64 inch wide (1,626mm)
<b>INK MODE</b>	8 colour
<b>RESOLUTION</b>	2880dpi x 1440dpi with Variable-sized Droplet Technology
<b>INK SYSTEM</b>	

Note: 110ml starter cartridges are supplied with the printer

9-Colours pigment ink [(C, VM, Y, Lc, Vlm, Llk, Photo K, Matte K) with 9 slots]  
Active Matte and Photo Black  
Ink Capacity 700ml

PRINTER SPEED	PRINTER RESOLUTION	PRINT TIMES(A0 SIZE)	PRINT MODE
PLAIN PAPER	360 x 360dpi	1.9 minutes	Draft
	360 x 720dpi	3.3 minutes	Normal
	720 x 720dpi	6.7 minutes	Fine
PREMIUM PHOTO PAPER	720 x 720dpi	12.6 minutes	Fine
	1440 x 720dpi	16.0 minutes	Super Fine

**PRINTER DRIVER** Windows® 2000 / XP, XP x64, Vista, Vista x64, Mac® OS X 10.2.8 or later

<b>HEAD CONFIGURATION</b>	Micro Piezo TFP Print Head 360 nozzles x 9 slots with VSDT
---------------------------	---

MEDIA DIMENSION	
ROLL MEDIA	Media width: 406mm - 1626mm (16" - 64") Media height: Height at 1 job: 127 to 15,000mm Media thickness: 0.08mm - 0.50mm
CUT SHEET	Manual insertion feeder for media up to 1.5mm Media width: Size: A4 / LTR - A0+ / 44", (210mm - 1118mm) Media Length: Length: 279 to 1,580mm Media thickness: 0.08mm - 1.50mm

**ROLL DIMENSIONS** Core diameter 2" or 3", Max. Outside Diameter Ø 150mm

**PAPER OUTPUT CAPABILITY** Auto take up reel, Output bin, Single roll system, Auto media cutter

<b>PRINTING AREA (WIDTH)</b>	Max. 1635.5mm (Borderless Printing width: 10", 13", 16", 17", 515mm, 594mm, 24", 728mm, 36", 44", 50", 54")
------------------------------	---

PRINT MARGINS	
ROLL MEDIA	4 modes available; mode 1: 3mm on all edges (top, sides, bottom) mode 2: 15mm (top and bottom), 3mm (sides) mode 3: 15mm (top, sides, bottom) mode 4: 35mm (top), 15mm (bottom)
SHEET MEDIA	2 modes available; mode 1: 3mm(top, sides, bottom) mode 2: 3mm (top and sides) 14mm (bottom)

**TOTAL PRINT VOLUME** 20,000 B0+ sheets

**CONSUMABLE PARTS** Cutter blade, maintenance tank

**MAINTENANCE PARTS** Pump unit, flushing box, head cleaner, cap assembly

**RELIABILITY**

CUTTER BLADE Approx. 2,000 cuts  
FILM Approx. 1,000 cuts  
CARRIAGE MOTOR 6.3 million pass

**MEMORY** 256MB (main) 64MB (network)

**LANGUAGES** ESC / P2 Raster and /P3

**INTERFACES(STANDARD)**

USB2.0 (Compatible with 1.1)

10/100/1000 Base-T (Ethernet)

**VOLTAGE / CURRENT / FREQUENCY** 100 - 120V version, 220 - 240V version

**OPERATING ENVIRONMENT**

TEMPERATURE 10°C to 35°C

RELATIVE HUMIDITY 20% to 80% no condensation

**NOISE LEVEL** Approx. 50dB (A)

**POWER CONSUMPTION**

PRINTING Approx. 100W

STANDBY Approx. 20W or less

POWER OFF 1W or less

**DIMENSIONS**

2,348mm(W) x 685mm(D) x 1,190mm(H)

**WEIGHT**

Approx. 150.5kg (excluding Ink and Media)

**UTILITY SOFTWARE**

STANDARD Epson LFP Remote Panel, Epson ColorBase, NW utility software

OPTIONAL Epson PageProofer, Epson CopyFactory

**\*LIGHTFASTNESS TEST CRITERIA (INDOOR DISPLAY CONDITION)**

Test Conditions

1. Under fluorescent light (Indoor Display Condition) with glass mount

2. The data is calculated by Epson's accelerated test and it does not mean Epson guarantees periods.

3. The estimated longevity does not indicate the colour changing and the durability of the paper itself.

Light Source: Fluorescent Light

Intensity: 70,000 lux

Temperature: 24°C

Humidity: 60%RH

Glass mount: 2mm, soda lime

Fade criteria: Pure YMC 30% loss at OD = 1

Display-life calculation: Total illuminance/  
(500lux x 10hours x 365days = 1 year)



As an International ENERGY STAR Partner, Epson has determined that this product meets the International ENERGY STAR guidelines for energy efficiency. Epson is the registered trademark of SEIKO Epson Corporation. Epson Stylus, PerfectPicture, MicroPiezo, AcuPhoto Halftoning, QuickDry are the trademarks of SEIKO Epson Corporation. All other names and company names used herein are for identification purpose only and may be the trademarks or registered trademarks of their respective owners. Epson disclaims any and all rights in those marks. All print samples shown herein are simulations. Specifications are subject to change without notice.